

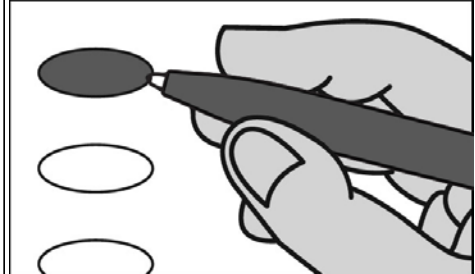
# Official Ballot

## Nonpartisan Office

### April 2, 2019

**Notice to voters:** If you are voting on Election Day, your ballot must be initialed by two election inspectors. If you are voting absentee, your ballot must be initialed by the municipal clerk or deputy clerk. Your ballot may not be counted without initials. (See right column of ballot for initials.)

#### General Instructions



If you make a mistake on your ballot or have a question, ask an election inspector for help. (Absentee voters: Contact your municipal clerk.)

To vote for a name on the ballot, fill in the oval next to the name like this: ●

To vote for a name that is not on the ballot, write the name on the line marked "write-in" and fill in the oval next to the name like this: ●

#### Judicial

##### Justice of the Supreme Court Vote for 1

- Brian Hagedorn
- Lisa Neubauer
- write-in:

##### Court of Appeals Judge, District 4 Vote for 1

- Jennifer Nashold
- write-in:

##### Circuit Court Judge, Branch 1 Vote for 1

- Karl Hanson
- write-in:

##### Circuit Court Judge, Branch 2 Vote for 1

- Derrick A. Grubb
- write-in:

##### Circuit Court Judge, Branch 4 Vote for 1

- Daniel T. Dillon
- write-in:

#### Municipal

##### Town Board Chairperson Vote for 1

- Sharon Douglas
- write-in:

##### Town Board Supervisor 1 Vote for 1

- Sarah Pope
- write-in:

##### Town Board Supervisor 2 Vote for 1

- Loren Bobolz
- write-in:

Continue voting at top of next column.

#### Municipal (Cont.)

##### Town Clerk Vote for 1

- Sandra Clarke
- write-in:

##### Town Treasurer Vote for 1

- Jill Bier
- write-in:

##### Constable Vote for 1

- Charles T. Stevenson
- write-in:

#### School District

##### School District of Delavan-Darien School Board Member Vote for not more than 3

- David Henriott
- Tiffany A. Schutt
- John Andreoni
- Sharon H. Gonzalez
- write-in:
- write-in:
- write-in:

## Official Ballot

Nonpartisan Office

April 2, 2019

for

T. Bradford Delavan-Darien

**Ballot Issued by**  
\_\_\_\_\_  
Initials of election inspectors

**Absentee ballot issued by**  
\_\_\_\_\_  
Initials of municipal clerk or deputy clerk  
If issued by SVDs, both SVDs must initial.

**Certification of Voter Assistance**  
I certify that I marked or read aloud this ballot at the request and direction of a voter who is authorized under Wis. Stat. § 6.82 to receive assistance.  
\_\_\_\_\_  
Signature of assistor

#### For Official Use Only

**Inspectors:** Identify ballots required to be remade.

- Reason for remaking ballot:**
- Overvoted
  - Damaged
  - Other

Original Ballot No. \_\_\_\_\_ or Duplicate Ballot No. \_\_\_\_\_  
\_\_\_\_\_  
Initials of inspectors who remade ballot